

SITS
COLLECTION 2021

C O N T E N T S

ABBE	284	202	HOWARD	194	110	NEPPI	179	144
ALASKA	258	204	HUGO	75	34	NEW YORK	288	238
ALEX	62	6	IMPULSE	72	36	NOVA	160	145
ALMA	74	7	ISA RELAX	122	64	OHIO	108	58
ALVA	26	8	JACK	142	111	OLIVER	86	61
AMY	282	207	JENNY	182	112	OSCAR	286	239
ANJA	134	86	JENNY BISTRO	230	115	PALMA	216	149
BARI	204	90	JOHN	198	116	PASSION	220	154
BETTY	152	91	JULIA	276	221	PENNY	290	241
BIANCA	176	93	JUNO	82	39	PHOENIX	224	157
BIRD	47	77	JUSTUS	78	41	PLAY	196	158
BLACKBIRD	40	10	KALLE	190	118	POLA	106	62
BOB	30	14	KARIN	56	42	POLLY	156	159
BRANDON	260	208	KARLA	164	119	QUATTRO	208	163
CAPRICE	28	15	KLARA	158	122	RONJA	162	167
CASUAL	283	246	KORIANDEK	210	126	ROOM	38	79
CHARLIE	32	17	LENA	264	226	RUCOLA	110	66
CIRCLE	178	97	LIAM	84	43	SALLY	192	170
CLARK	58	20	LILL	250	231	SARA	254	242
CLASSIC	129	78	LINDA	280	232	SECRET	244	197
CLEO	22	21	LINN	232	127	SHELL	118	67
CLOUD	262	212	LINNEA	64	46	SIGGE	114	68
COLORADO	268	215	LIV RELAX	124	65	SIRI	80	70
CRYSTAL	242	196	LOVE	292	247	SOFTBIRD	50	13
DAHLIA	136	98	LOVEBIRD	44	11	SOPHIA	148	174
DAY & NIGHT	186	99	LUCA	90	49	SPACE	180	198
DOMINO	54	23	LUCY	144	128	STEFANI	117	71
ELIS	240	100	LUDVIG	96	51	STELLA	170	177
ELSA	68	26	LUKAS	202	130	TEDDY	172	183
EVY RELAX	126	63	MAJA	98	52	TETRIS	39	81
FATTY	270	217	MALIN	168	132	TIMJAN	238	186
FELIX	138	104	MALTE	248	235	TOKYO	100	72
FIONA	154	106	MATTIAS	92	53	URBAN	128	82
FOXI	70	27	MAX	95	55	VALENTIN	150	188
FRANKIE	34	28	MERLIN	228	136	VARIO	234	190
FREJ	24	30	MILANO	212	137	VENEZIA	225	194
GRETA	184	107	MINI	102	56	VIGGO	226	195
HARRY	116	32	MOA	146	140	VIKTORIA	256	243
HEAVEN	272	218	MOKKA	103	57	VILLE	120	75
HENRY	140	108	MYBIRD	46	12			
HOLLY	36	33	MYNTA	218	142			





comfortable
life





28 years *is a long time*

SAY WHAT YOU WILL ABOUT TIME, but sometimes it works in your favour. Let enough time pass, and it will bring perspective, to clarify if what you thought was a good idea actually turned out to be one.


We look back on a history in which we have found new ways of manufacturing furniture and have gone from a company employing dozens to one employing thousands, with a presence in more than twenty European markets.

And it seems we are not the only ones who recognize that we are on to something. Being chosen to be a supplier to one of the largest home furnishing companies in the world has meant a lot – for developing our business, as well as for the encouraging stamp of approval it brings.

Our history shows that we achieved what we set out to do: become a long-term-thinking, reliable company. But in order to remain that way, we must rely on anything but the past. Instead we have to keep moving, to keep making progress, every day and on every level.



dedicated
to comfort



A WHILE AGO WE MADE A QUICK CALCULATION and it turned out that roughly 4,000 pieces of SITS furniture found a place in someone's home every day. Today we've probably surpassed that number, but we're just as humbled by it. To take a place in someone's life brings responsibility. And our way of living up to that is by always delivering on the one thing we know our customers look for in our products: comfort.

To be able to relax into a sofa or to enjoy the design of a table is what SITS is all about.

But getting into the comfort zone, contrary as it may seem, is hard work. From design through production, up to the final moment of truth, we focus on one thing and one thing only: you. Our design needs to be matched by your experience. And the quality of our products will enable you to enjoy them for many years to come.

You can take comfort in many things. We just never take it for granted.





handmade

If there is anything 25 years of experience has taught us, it is that quality comes from the human touch. Hands have the power to transfer a design vision into a comfortable experience like no other tool. They make fabric fold and stretch just the way it should. And in their touch lies the final approval before we send a new sofa off for delivery.

From one pair of hands to another. That's not to say we never use technology—but it's always as a tool, never as a replacement for the person operating it. At SITS every member of our staff is a key player because everyone contributes to making our furniture what it is. That's why we give our staff the best working conditions.

Having a human touch in everything we do simply makes our products better.





making furniture *for people*

TO US, THAT'S AN OBJECTIVE THAT INVOLVES THE END PRODUCT as much as it involves the footprint of our production process. At SITS we are trying our best to improve the way we do business by following the GREEN BY SITS strategy. It guides all of our work, from minimising CO₂ emissions in our supply chain, to choosing FSC-certified wood, and making sure we leave no stone unturned in our own plants. For example, in 2012 we started using 50% less energy to illuminate our assembly rooms.

We have also invested in energy-efficient equipment and we power our production with energy from renewable sources.





we are *family*

SITS WAS FOUNDED LIKE TO SO MANY OTHER COMPANIES: AS A FAMILY BUSINESS. And as the company has grown with time, so has our family. Because that is still how we like to think of Sits.

Being a family means caring about each other. Since people make our company what it is, it also makes sense to put them at the centre. Showing that you care is simply the best way to make others care about you. And that is something we notice everyday, in the dedication to detail and creativity that makes our company run.

We want Sits to be a company where you know us by name. Where you recognise people and faces from year to year, and where the door is always open.

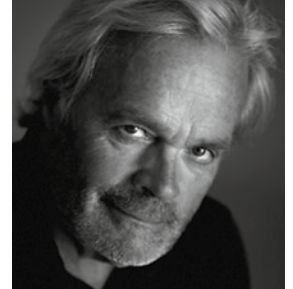
We're family. And you're welcome to join us.

our designers



STEVEN SCHILTE. Started his career as a student at the Design Academy in Eindhoven. From there he has built a successful career as a product designer working for such renowned companies as Jan des Bouvrie, before going freelance. His furniture designs have won several awards, for instance at the »Salon du Meuble« in Paris, the red dot design awards, the interior innovation award, as well as been nominated for the German Design Prize.

NIELS GAMMELGAARD. A renowned designer who studied under Erik Herløw at the Royal Danish Academy of Fine Arts in Copenhagen, Niels graduated in 1970 and went on to cofound Pelikan Design with Lars Mathiesen, designing everything from small pencils to tricycles and hospital beds. Pelikan is best known for its design of commercial furniture, with many of the most prestigious Danish furniture manufacturers—including Fritz Hansen, Bent Krogh, Fredericia and Erik Jørgensen – among its clients.



DAN IHREBORN. A freelance designer since 1991 with specialities in contemporary furniture and office environments, Dan brings a refreshing perspective to SITS: »For me, sofas and easy chairs should give a simple, light and resilient impression, even if they have powerful volume. They should, of course, also be really comfortable and easy to care for. But above all, their design must last longer than ordinary trends.«

IAN ARCHER. With a passion for sculpture and product design, Ian studied furniture in Birmingham, graduating from the School of Architecture and Design in 1989. He then worked in contract furniture before establishing himself as a furniture designer and then a design director in the domestic upholstery industry. With interests that embrace both classic and modern design, Ian formed his own consultancy. Today his work can be seen in such stores as John Lewis, Heal's, Laura Ashley, Harrods and Couch, as well as many other independent retailers across the UK, Europe and Asia.



BÖTTCHER&KAYSER is a Berlin-based studio working in the fields of consumer product, furniture, lighting and interior design. It was founded in 2007 and is running today by Moritz Böttcher and Nikolaus Kayser.

Moritz Böttcher (1978) graduated as an industrial designer at the University of Applied Sciences and Arts in Hannover in cooperation with Dornbracht. He worked at npk industrial design in Hamburg and the Netherlands, Barskidesign in Frankfurt and from 2006 to 2008 for Werner Aisslinger in Berlin.

Nikolaus Kayser (1978) is a qualified carpenter and studied industrial design at Muthesius Kunsthochschule in Kiel. After his diploma he worked for three years as a designer at wiege Entwicklungsgesellschaft. His focus there was in the field of high-quality office furniture, especially on chairs for the German manufacture Wilkhahn.



ANNA NÄSSTRÖM. Anna is more or less born on the upholstery factory floor, as she is the daughter in the family that started Sits almost 30 years ago. With a strong passion for Scandinavian design and a soft spot for deep and soft sofas that really embraces you, her first sofa Lill is now released. With a background in fashion- and graphic design as well as years of work with communication at Sits, it was about time to design her first sofa piece and be sure there is more to come.



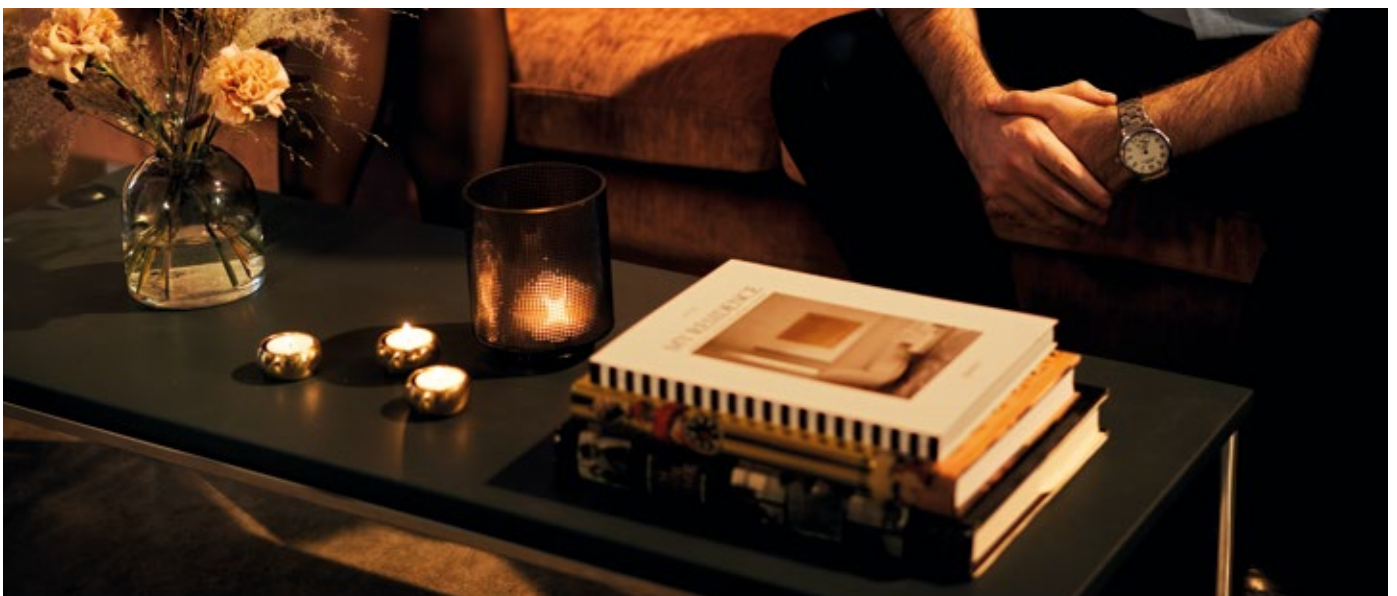


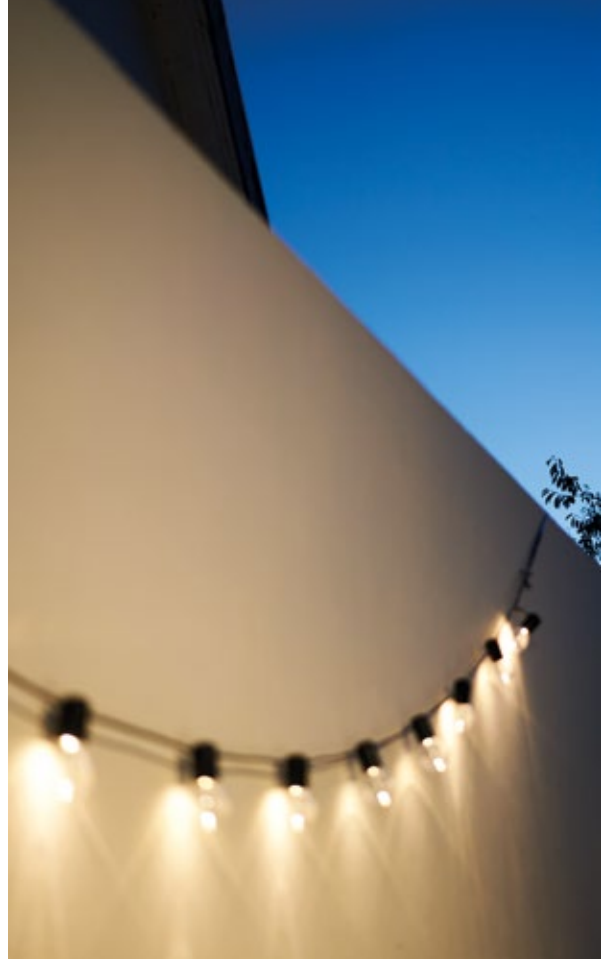


what are you
in the mood for?

We've chosen to arrange our products by inspiration. Think of our collections as clusters united by a certain feeling rather than categories divided by origin, material or designer. That's why we call them mood collections.

In every mood there are certain features that form the basis for the collection. But the mood is there just to inspire, leaving the final decision up to you. If you think a certain sofa belongs to a different setting than we suggest, who are we to say otherwise?





Cocktail & design

LIVE THE LIFE YOU LOVE. Bring all fabrics, colours and styles you want and turn your home into a showroom filled with energy, lifestyle and friends. This is where you find furniture to match your personality. And with all these possibilities, who wouldn't like to show off?





Cleo

Cleo is just as luxurious as it is generous to allow the whole family to come together and hang out in grand style. With bold and unconventional forms, dynamic shapes and international styling, this modular sofa is a loungers dream come true. With quilted detailing and upholstery adding softness, nothing is left to chance. This sofa should be enjoyed as much for its comfort, as for its iconic and luxurious style.

*Design: Ian Archer.
Caleido stampato 2 beige.*

» 2 I



Frej

Stripped from all excess and designed around a concept of the contrast between architectural simplicity and inviting softness, Frej stands out from the crowd. With modern, long, sweeping lines and minimalistic aesthetics, it is a sofa that brings a sophisticated and timeless elegance to any high demand interior space or living room. Why not make this sofa even more personal and combine a smooth leather covered frame with natural fabric cushions for a unique contrasting look? With "Frej" the choice of elegance and style is truly yours.

Design: Böttcher & Kayser.

Willow 3 mustard. Aniline 2 cognac.

» 30





Decoration pillows not included

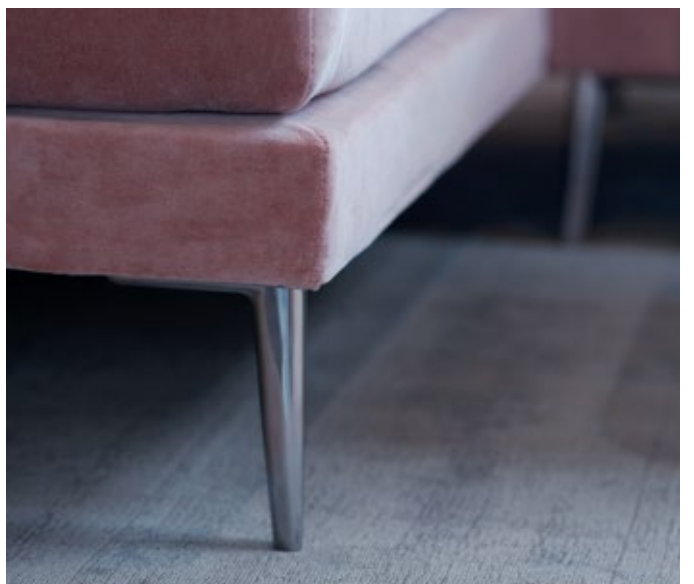


Alva

The minimalistic shape and elegant details make Alva a distinctive design in itself. But the real magic happens when you are added to the mix. Move, extend, and re-arrange it any way you like to create your very own expression.

The modules of Alva can be combined into many different combinations. The range also includes an armchair and a small sofa. Malibu velvet 8 powder pink.

» 8





Caprice

A modern, elegant, and original sofa, Caprice is light on the eye. But it's certainly no light-weight when it comes to customisation. The wide range of options makes it a perfect starting point for creating just the sofa you want.

Malibu velvet 5 blue.

» I5





Bob

This comfortable armchair is just as soft as it looks. To really round off the design, why not add a matching pouf? Bob is available in fabric or leather, and can be had with metal or wooden legs.

*Design: Steven Schilte.
Paris 1 beige.*

» I4





Charlie

The sleek, light look is created by the distinctive upper front panel and thin seat cushion. But don't let that fool you – this sofa lacks nothing in softness. And with an inspiring range of modules it offers unlimited possibilities, including new funnel-shaped wooden legs.

Design: Steven Schilte.

Lario 05 light brown. Tweedy 4 brown. Paris 7 light grey.

» I7







Frankie

There's nothing square about Frankie. This modular sofa inspires creative solutions like no other. Include an armrest, or make it an open-ended invitation. Choose metal or wooden legs. Pillows with or without stitching. It's all up to you to mix, match and extend any way you like.

Design: Steven Schilte.

*Aniline 1 latte. Iris 6 green. Viola 6 green.
Touch 4 stone.*

» 28



Holly

With a confident stance that is bound to impress, this armchair comes in three different upholstery variants: fabric, leather and a version in fabric with a leather front to create a stylish contrast. Holly is available with a metal or wooden frame.

Design: Dan Ithreborn.

Paris 7 light grey, detail: Aniline 8 black. Atropa 4 mustard, detail: Aniline 8 black.

» 33





Room

This coffee-table rests on a thin metal frame that is light on the eye, but sturdy enough to cope with all your coffee-table books. Add a soft, rounded wooden top and you've got a simple, yet convincingly stylish companion to any contemporary interior.

Design: Dan Ihreborn.

» 79





Tetris

Is it time to level up your interior? The characteristic holes make Tetris the perfect building block for adding a different and strikingly stylish feel to the room.

Design: Dan Ihreborn.

» 81



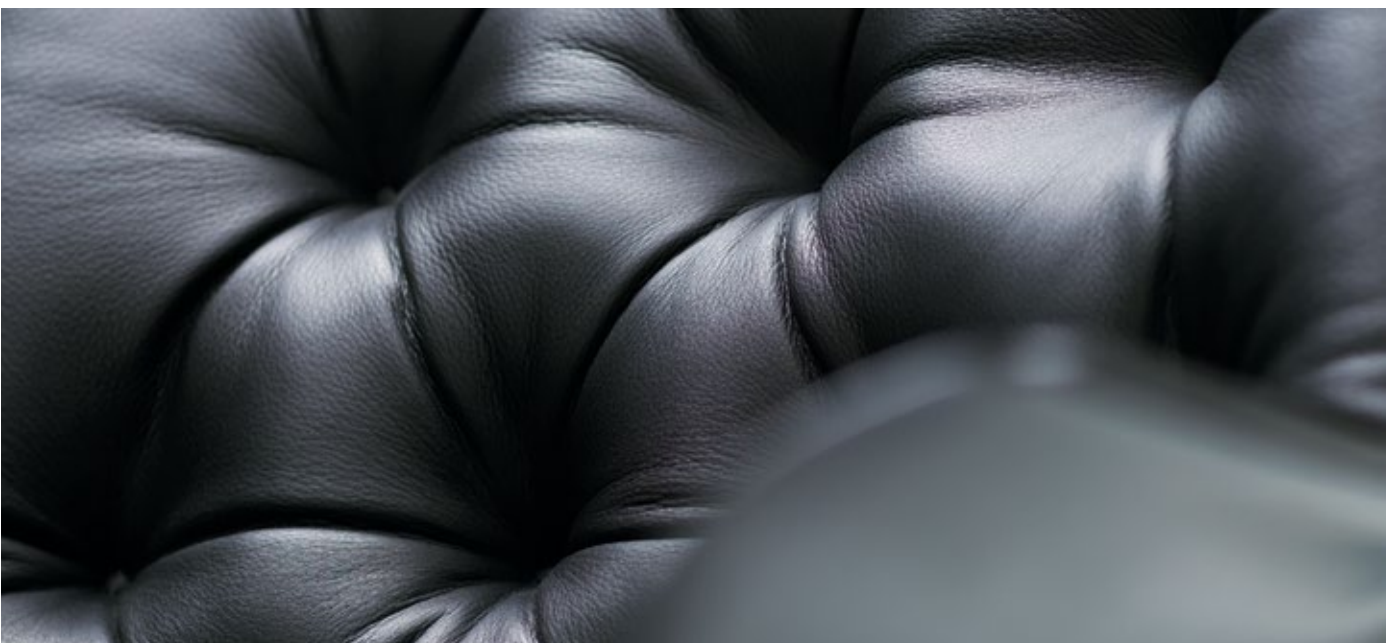


Blackbird

The Blackbird armchair is part of the Birds Collection. With a form inspired by nature, it offers exceptional comfort thanks to modern technological solutions. The shell-shaped external frame is made of a composite material used in boats. The quilting and sharp edges, emphasised by the colour of the upholstery, create a dynamic appearance.

Design: Zweed. The Blackbird armchair can be supplemented with a footstool or a table. Aniline 8 black. Aniline 4 natur.

» IO











Lovebird

Protected by a round, egg-like shell, Lovebird offers an oasis of comfort made possible by modern technological solutions. Soft and inviting, yet distinctly designed, it's got everything you can possibly wish for in a new favourite chair.

Design: Zweed.

The Lovebird armchair can be supplemented with a footstool or a specially designed table.

Lario 1402 dark green. Tweedy 6 blue. Nancy 5 light grey.

Avatar 1 natur – fabric out of the collection.

» II





Mybird

Mybird is one of four armchairs in The Birds Collection. Related, but also the one that really stands out. The unique edges and harmonious sections of the armchair seat and backrest make it a piece of furniture that demands attention, and rewards it with reassuring comfort.

Design: Zweed.

The Mybird armchair can be supplemented with a footstool or a specially designed table.

Aniline 8 black. Aniline 4 natur.

Country 13 anthracite.

» I2





Bird

The Birds coffee table was created with proportions and aesthetics that perfectly supplement the functionality and beauty of the Birds collection.

Design: Zweed.

» 77





Softbird

Softbird spreads its wings wider, to offer even more room in the comfort zone. Like the other chairs in the Birds Collection it is inspired by nature, mixing natural materials like feather fillings with modern technological solutions to create exceptional comfort.

Design: Zweed. The Softbird range includes an armchair with a matching footstool and table. Specchio 1 natur. Lario 1404 anthracite. Linen L616 007 stone. Origin 1 natur – fabric out of the collection.

» I 3







Domino

This Domino collection will never fall, at least not short of options. With a multitude of different modules you can easily create your arrangement to enrich any interior. And to further add to the wealth of options, Domino is available in many different upholstery fabrics.

Elmas 15 grey – fabric out of the collection.

» 23





Decoration pillows not included



Karin

The curvy elegance of Karin brings contemporary style to any interior, draws you in and wraps you in comfort. The choice of fabric or leather finetunes the furniture to your preferences, along with the option of wooden or metal feet.

Design: Ian Archer.

Stipa 8 turquoise.

Matrix dark grey.

Tweedy 6 blue.

» 42





Clark

Light on its feet, yet convincingly stable. The design of Clark delivers on the promise made by the shiny steel frame and the equally well-balanced upholstery. A young and dynamic look, that fits well into any interior.

Design: Niels Gammelgaard.

The chair is also available with an armrest.

Lario 58 blue. Cortina 2 light beige – fabric out of the collection.

Bona 9 dark blue – fabric out of the collection.

» 20









Alex

The unique backrest and tilted ergonomic footstool distinguishes our bestseller Alex and adds character to the entire room. And while the good looks may catch your attention, it is the exceptional comfort that will make you return.

Design: Dan Ithreborn.

Classic velvet 5 grey. Malibu velvet 8 powder pink.

Country 5 light turquoise. Lario 2003 dark grey. Aniline 7 grey.

» 6







Linnea

A simple design that allows more room for comfort. That is the philosophy behind Linnea. Comfortable backrests and cushions turns the sofa into the perfect retreat, appearing to hover over ground thanks to the almost invisible legs.

Every module is freestanding, to give you even more options and flexibility.

Risco runner 1 natur – fabric out of the collection.

» 46









Elsa

A classic look never goes out of style. The perfect proportions with simple, but characteristically shaped armrests make Elsa a contender for the easychair Hall of Fame. A neckrest pillow provides comfort and the high, thin wooden legs add to the slender silhouette.

*When you want to put your feet up, why not do it on Elsa's matching ergonomic footstool?
Avatar 1 natur – fabric out of the collection.*

» 26





Foxi

Taking inspiration from the sleek style of the 70's does not prevent Foxi from fitting right into a modern interior. The unique design is achieved through the simplicity of the seat, and by allowing a single wooden element double up as armrest as well as leg.

Avatar 4 dark grey – fabric out of the collection.

» 27





Impulse

How do you want your sofa to look? Add your own personal touch by choosing metal or wooden legs. You can also choose the type of armrest, add armrest cushions, and opt for a fixed or removable cover. All these touches will help give Impulse your unique style.

Caleido 3790 light beige.

» 36



Alma

Take a thick and springy seat, add a soft back cushion with decorative buttons, and a rounded backrest that seems to embrace you. If you do it right you'll end up with Alma – the quintessence of comfort. Our version also comes with a bonus: Each part of this armchair can be made of a different type of fabric.

Specchio 4 navy blue. Malibu velvet 4 turquoise.

» 7





Hugo

The clue is in the cushions. A high resilient foam guarantees comfort and the smooth look of the seat and rear surface. Hugo also offers the choice of comfort lux or standard cushions with stitching to provide an individual and sensual touch.

Design: Ian Archer.

Science mores 5 light grey.

» 34











Justus

A clearly defined geometric shape combined with soft, delicate, feather-filled seats – what’s not to love about that? Wide armrests and the use of a frame with metal legs further accentuates this modern yet highly practical piece of furniture. And there’s more: The collection consists of many items that can be freely arranged to fit your desire.

Design: Niels Gammelgaard.

Gobi kotton 3 pink – fabric out of the collection.

» 41

Siri

Siri puts comfort first. A timeless design, with two different seat depths allows you to relax and unwind. Put your feet up on the footstool and return to the real you.

Design: Dan Ithreborn.

Touch 8 cognac. Tweedy 5 black-white, detail: Touch 6 black.

» 70





Juno

Comfort is in the details. Like a cushion roll that supports your head at just the right height as you lie down to catch a nap or a movie. It's just one of the advantages of Juno. You're more than welcome to discover the others.

Design: Dan Ithreborn.

Drom 02 beige, detail: Touch 8 cognac.

» 39







Liam

Arrange it any way you like – the possibilities are endless! Choose your favourites from a wide range of freestanding and connectable units or pick one of the ready-made sets. For this model we are also proud to offer our new comfort option, which features luxurious cushions filled with allergen-free silicone balls.

Elyot 8 green.

» 43



Decoration pillows not included



Oliver

Defined by its conspicuous metal frame, Oliver is a stylish addition to any room. But this chair is not just about design. Have a seat and you'll soon notice that there's more to Oliver than good looks.

*Design: Ian Archer.
Aniline 2 cognac. Stipa 9 green.*

» 6I













Luca

Why change a winning concept? A clean, modern design, with comfortable cushions and plenty of room. Solid in every sense of the word, yet gracious and elegant, it's a natural fit into any modern interior.

Touch 6 black. King 1 natur.

» 49





Mattias

A sofa that allows for innovative interior arrangements. The chaises longues, benches, sofas and cushions come in various sizes and can be arranged any way you prefer. Note the back cushions with rollers on the inner side; with these, you can create gentle slopes and curves and soften the right angle of the settee back.

*Dover 4 blue-grey – fabric out of the collection.
Gobi kotton 1 nature – fabric out of the collection.*

» 53







Max

The lightness of style, characterised by well-defined lines, makes Max stand out from the crowd. Accompanied by a footstool it turns into an elegant easy chair. Available with or without buttons, and with the choice of fabric or leather cover.

Design: Ian Archer. The low armrest puts your arms in a natural, ergonomic position.

Luis 1 white – fabric out of the collection.

» 55

Ludvig

Perfectly balanced proportions with a futuristic edge. It's a look that is modern, light and bound to make an impression. Especially when you take a seat. Because despite the contemporary design, it offers plenty of good, old-fashioned comfort.

Ludvig is made with Dynaflex, which provides elastic comfort in a thin frame.

Divine 40 light blue.

» 51







Maja

Once the first surprise from the playful and strikingly different design has settled, you're ready for the next: Maja is also surprisingly comfy. From there you're ready to go into detail, with the soft fabrics and stitchings that showcase the workmanship that goes into this sofa. But were you really expecting anything else?

*Design: Ian Archer.
Elyot 6 orange.*

» 52





Tokyo

Create spectacular arrangement solutions with this modern line of modular furniture. Top quality materials and a wide range of elements allow your personal touch to shine through.

*Design: Niels Gammelgaard.
Elyot 6 orange.*

» 72



Decoration pillows not included

Mini

Petite. Chic. Elegant. Comfortable. Though not necessarily in that order. Mini is what you make of it. But we can promise you one thing: it will not go un-noticed. With vertical stripes and its chubby shape this chair proves that being small should never stop you from making a big impression.

*Design: Dan Ithreborn
Lario 58 blue.*

» 56





Mokka

Offering the versatility of a pouffe, but equipped with a profiled backrest for seating comfort, Mokka plays many parts. The handy size means it's easy to move around to wherever you feel there's a need for an extra seat, or just a stylish companion piece of furniture.

Aniline 2 cognac. Elyot 4 salmon.

» 57





508 22

MP
MONTREAL

351 303 151

151

351

151





Pola

If you like traditional forms with a modern look, you're in for a treat. The classic origin of this sofa manifests itself through its gentle, rounded line and the quilting on the backrest. Balanced by a light shape and high legs, the expression is one that fits right into a contemporary surrounding.

Vireal 7 light turquoise – fabric out of the collection.

» 62





Ohio

Minimalist in everything but comfort. This is a sofa designed for modern interiors, sophisticated in terms of design and modular furniture. Arrange it yourself or choose from our suggested sets, all with thicker seat cushions filled with highly flexible foam or natural down.

Nancy 2 beige.

» 58





Rucola

Don't you just love it when things are just right? When a sofa is neither too low nor too high, or when the cushions are neither too soft nor too hard, but just right? Part of the secret is the beautifully formed legs, that elevate the body to a comfortable height.

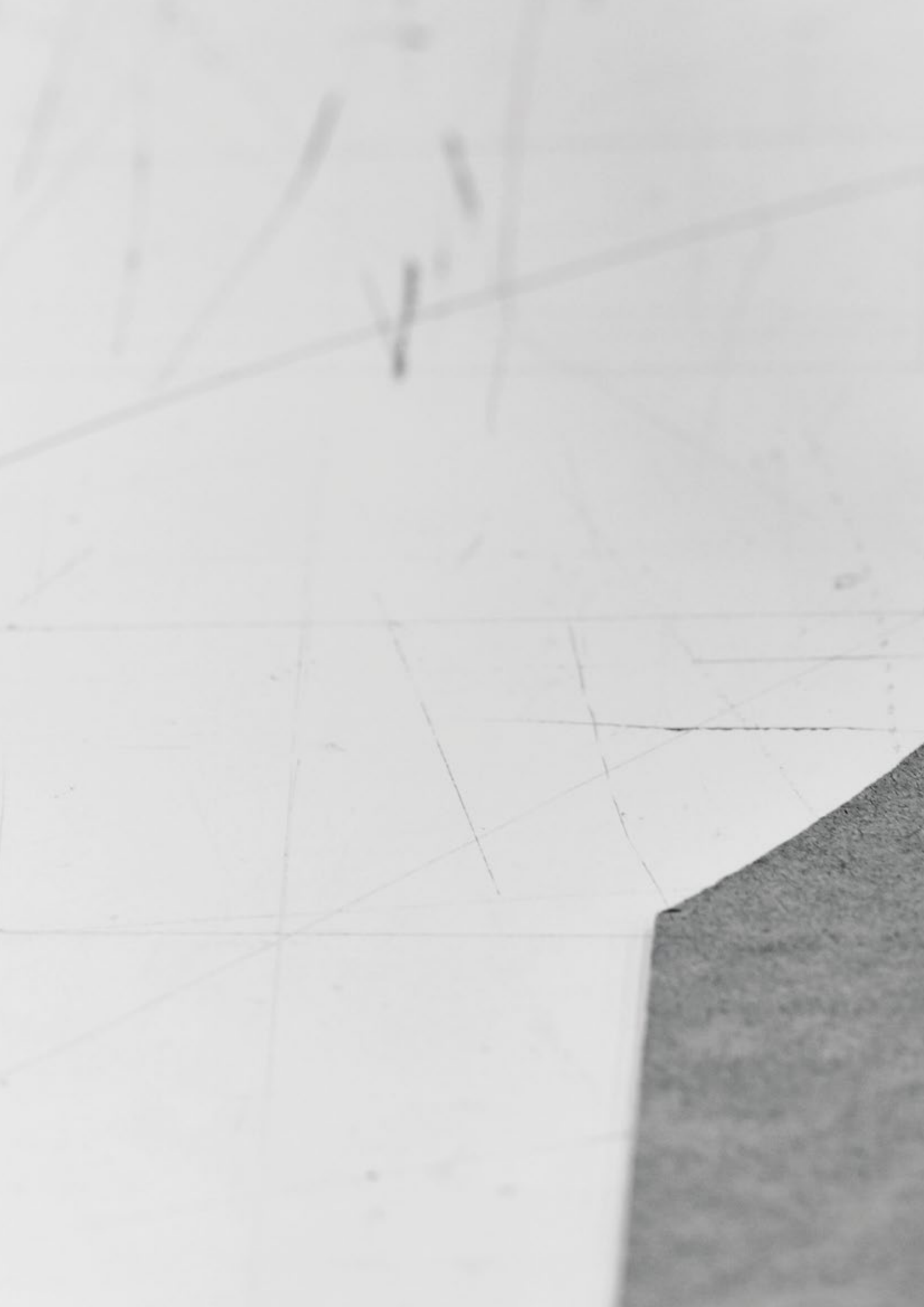
Design: Ian Archer.

King 4 light grey.

» 66









Sigge

Comfort all around, that's what Sigge is about. Want to use the armrest as your backrest? No problem, we've made both just as soft and comfy. And thanks to the modular design, you can create your own arrangement, including your choice of legs and fabric or leather cover.

*Design: Steven Schilte.
Moss 1 mustard.*

» 68







Harry

Invitingly generous and confidently stylish, Harry is not afraid to make you look twice. A chair that really proves how clean, simple design can be the recipe for something out of the ordinary.

Design: Ian Archer.

Aniline 7 grey. Lario 54 dark blue.

» 32





Stefani

Is it one armchair or two? Depending on which legs you choose, Stefani takes on a whole different expression. From the Scandinavian style wooden legs, to the stylish swivel base with built in tilt which lends an international touch suitable for public spaces or offices.

*Design: Niels Gammelgaard.
Country 12 grey. Tweedy 2 beige.*

» 71



Shell

Simply stylish. With the shape of the seat and the unusually decorative base we can't think of a better way to describe Shell. The seat of the armchair will surround you with a sense of comfort and peace. The light weight of the armchair is ensured by its base, which can be either a metal frame or a swivel leg. In either option, the armchair will shine and bring extra light into your interior.

Malibu velvet 3 light turquoise.

» 67







Ville

Bold, confident and comfy. Ville claims its space like few others. To add to the personality it comes in two versions – with or without buttons. And to really make your mark why not go for piping in a contrasting colour?

Design: Ian Archer.

Arya 6 anthracite.

» 75





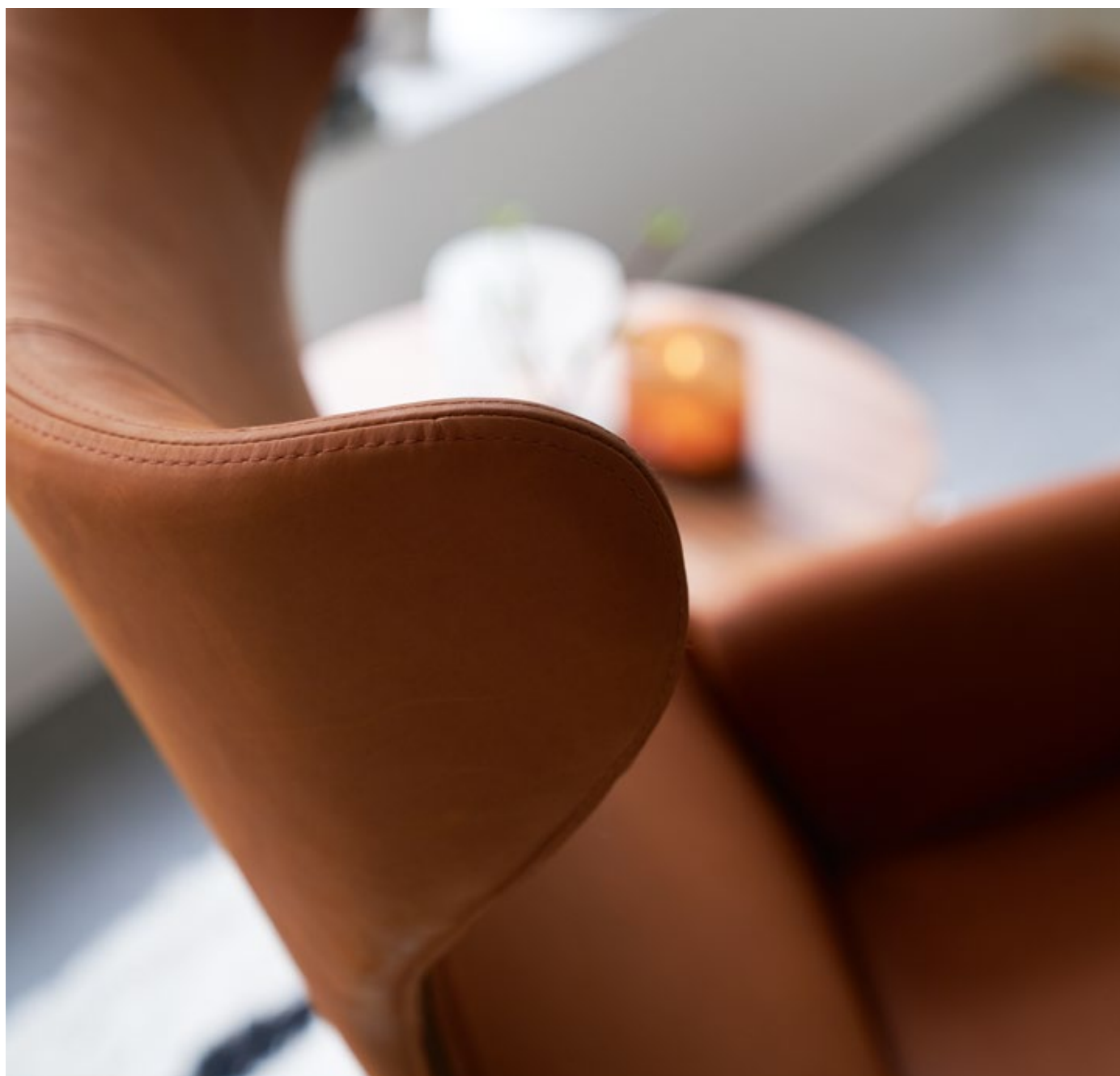
Isa relax

A recliner is for taking it easy, what else? And no chair proves the point better than Isa, with added points for looking good even when it's on standby. Available in a number of different covers and cushioning options, Isa is guaranteed to ease into any interior.

Design: Niels Gammelgaard.

Aniline 2 cognac.

» 64



Liv relax

Whether it's to enjoy a movie or just to catch a moment for yourself for a moment, there is no reason you shouldn't be able to lean back in style. To make life even easier, our new recliner tilts you into your desired position using no less than two electrical motors.

Design: Steven Schilte.

Malibu velvet 1 light grey. Aniline 5 sand.

Specchio 9 light grey.

» 65





Evy relax

Some easychairs are easier than others. In Evy relax you don't even have to lean back to lean back. The built-in motor will tilt the chair to your liking for you. All you have to do, as the name suggests, is relax.

Design: Steven Schilte.

Aniline 5 sand.

Tweedy 3 light brown.

» 63







Urban

A table with an attitude. Minimalistic legs in metal carry the handmade tabletops in architectural concrete or best quality wood. Rectangular, square and round shapes are available and it is possible to combine into a two level table.

Design: Niels Gammelgaard.

» 82



Classic

The Classic Coffee table is a minimalist design that is as delightfully simple as it is elegant. A classic frame in stainless or chromed steel, combined with a white, gray or black top.

Design: Niels Gammelgaard.

» 78





& home & family

THE WORLD OF HOME & FAMILY is all about togetherness – spending time with your loved ones and letting time fly, well knowing that not a second of it was ever wasted. This is where everyone feels welcome and there's always room for one more to join in the fun.







Anja

Capturing the essence of Scandinavian design with a presence just as beautiful as it is simple, Anja looks stunning from every angle. The signature armrests inspired by the fifties adds an unquestionable character and personality. Available in a multitude of combinations and comfort options, this sofa suits the need of many. Chose from one of our ready-made sets, or create your very own combination for everyone to enjoy.

Tulip 9 grey.

» 86





Dahlia

Dahlia is an outdoor sofa made only from components tested to withstand the influence of the outdoor elements. As the name suggests, the design is inspired by a flowering garden and its organic and ever-changing natural beauty. With its smooth feminine shapes, rounded armrests and loose hanging cover, Dahlia is modern and relaxed at the same time. Place it pool-side, on the terrace or chill out in your favourite spot of the garden. Of course, you are welcome to bring its elegance inside your house as well! With its removable cover, Dahlia can easily be changed to match the mood of the seasons and extend its longevity too.

Design: Ian Archer.

Maple 1 off-white.

» 98





Felix

Designed with both ideal proportions and ideal practicality, this is the sofa bed for those who appreciate minimalist aesthetics and the beauty of simple straight lines. Felix is available as a 3- or 4- seater and both options can be combined with a chaise lounge, making it the ultimate sofa for an unexpected sleepover party!

Lilac 3 light grey.

» 104







Henry

Henry is all class and no complications. It's easy to fall in love with this sofa bed, and it is just as easy to fall asleep in it too. To make it even harder to walk away from this little gem, you get to choose between 4 versions with optional corners and a chaise lounge with a practical storage compartment. Match Henry with your favourite cover and you will realise that you now have an incredible good-looking roommate too.

Lilac 3 light grey.

» 108







Jack

Make no mistake. With its natural wooden frame and distinctive design, Jack is, without doubt, a luxurious armchair with a masculine and contemporary appeal. Designed around the idea of timeless elegance, style and Scandinavian craftsmanship - this is one for the history books. And one for the great storytellers too.

Design: Ian Archer.

Aniline 1 latte. Aniline 2 cognac.

» IIII





A close-up photograph of a green corduroy sofa cushion, showing the texture of the fabric and the stitching of the cushion. The background is a plain, light color.

Lucy

Challenge accepted. Turn something as practical as a sofa bed into a stylish piece of furniture. And do not forget, it should be just as comfortable and useful for a good nights sleep as for marathon viewing your favourite show. Our sofa bed Lucy passes the test with excellence. Available in two sizes and with optional storage, it should provide plenty of customization options for the picky ones as well.

Ivy 6 green.

» 128

Moa

If you are looking to add a clear identity and character to your room, look no further than Moa. It is Bound to become a contemporary classic, this modern and playful sofa is both laidback and stylish at the same time. The styling is smooth and elegant, and combined with the elegantly curved lines - this sofa carries a unique urban expression. And better yet, it is just as comfortable as you want it to be.

Design: Steven Schilte.

Aniline 1 latte. Togo 1 natur.

» I40







Sophia

For those dreaming to lounge in extraordinary high comfort and classic grand style, make Sophia the centrepiece of your room. With its symmetric styling based on wide armrests which are in level with the back, this sofa is also great to the eye. As an added bonus, it comes in many different models, colours, and materials to choose from to provide the best solution for your interior needs.

Atropa 9 dark blue.

» I74





Valentin

High finish detailing, handcrafted quality and unique Scandinavian design. Valentin fuses the key elements of tufting sofas and combines them into something new and exciting. There is just as great volume to the back and armrests, as there is modern sophistication to its strong identity. Bring out a classic look by matching rich velvets and exposed wooden legs, or give it a modern luxurious twist with a flat weave fabric and metal legs. The choice is yours.

Design: Ian Archer.

Linen L007 2 flax.

» I 88





Betty

The generous cushions, slightly open armrests and a rounded backrest frame that enclose you in comfort, make Betty so easy to fall for – and so hard to leave. Available in Lux or Classic comfort, and two types of covers (fixed or loose with velcro).

Design: Dan Ihreborn.

King 10 black-white. Classic velvet 5 grey.

» 91





Fiona

The original shape, with rounded armrests and large seat cushions give this sofa unmistakable character. Two types of legs – metal or wood – allows you to put your own finishing touch on this modern classic.

Design: Dan Ithreborn.

Elyot 5 vintage red.

» IO6





86-MD75

Polly

Sometimes it just feels right. Like when you sit down in Polly. The level of comfort is just how you like it. The same goes for softness of the fabric, and the cushions are a dream to curl up with. Just like it should be.

Moss 1 mustard.

» I 59



Klara

With its classic form and ideal proportions Klara will delight you for years. Light wooden feet makes it take on a classic Scandinavian appearance. Pick black metal feet to add a modern character. And mix modules to create your very own expression.

Caleido stampato 10 steel.

» I22







Nova

Does this sofa feel familiar to you? If it does, it might not come as a surprise to find out that the designers reached back to the 70's for inspiration and came up with a piece of furniture that has great contemporary appeal. The richness of colour, textures and additional armrest cushions adds a modern touch.

*The armrest cushions are held in place with zippers.
Linen P823 6 spruce – fabric out of the collection.*

» I45





Decoration pillows not included







Ronja

Ronja is a celebration of Scandinavian design traditions. Available in a multitude of shapes and sizes, it's got everything you need to create a place for everyone to enjoy.

Avatar 4 dark grey – fabric out of the collection.

» 167



Karla

With Karla, we've only written the opening chapter – the rest is up to you. But whatever modules you choose to construct your story, we're sure it will be one of high-quality materials and craftsmanship.

Caleido stampato 11 grey-brown.

» 119











Malin

Every family is unique, so we've made a modular sofa to match. Based on a simple form, it offers a multitude of options. Choose one of our ready-made sets or make your mark by choosing from our range of fabrics, colours and feet.

Kiss 7 blue.

» I32



Stella

Looking for a sofa for the whole family, but with a light, stylish look inspired by Scandinavian design? Well, you might not have to look any further. Stella combines comfort and functionality with an elegantly slight frame a multitude of options.

Vireal 1 natur – fabric out of the collection.

» I77





Decoration pillows not included

Teddy

Has comfort ever looked better? The distinctive quilt that covers the seat, armrests and cushions of Teddy is an invitation to enjoy. Customize the sofa or armchair to your tastes by choosing wooden or metal legs, standard or lux comfort and your type of cover (fix or loose with velcro).

Design: Steven Schilte.

Atropa 6 cognac. Atropa 7 camel.

» 183









Bianca

With the whole family curled up in the sofa, accidents are bound to happen. But there is no need to worry; with a replaceable cover you can refresh your sofa as often as you like!

Linen P823 4 ash – fabric out of the collection.

» 93



Decoration pillows not included



Circle

Enchantingly simple, this perfectly shaped pouffe can work magic in any interior. Use it as an extra seat or two, invent your own way of using it, or let it add a touch of roundness to soften up the feel of your interior.

Country 5 light turquoise, 4 dark green, 8 steel, 6 blue, 7 dark blue, 10 pink, 11 light grey, 9 stone, 12 grey.

» 97



Neppi

There is nothing square about the Neppi cube. Apart from being a great solution when you lack a seat or two, it will also boost your interior with a contemporary edge.

Science mores 7 dark blue.

» I44



Space

Pardon the cliché, but for our Space table, less really is more. The light metal frame is available in black or white, and can hold a wood or glass surface.

Design: Dan Ithreborn.

» I98







Jenny

Elegant, cosy or surprising? Jenny takes design cues from Scandinavia with delicate proportions and minimalism. Yet it offers everything you could wish for in the comfort department. It just does things, well, differently, and delightfully so. So what's your choice: Elegant, cosy or surprising? We'll put our money on a combination of all three.

*Design: Ian Archer.
Stipa 4 nature.*

» II2



Greta

There is something about Greta. Maybe it's the gentle curves of the backrest, the beautiful wooden legs or the way you feel when you sit down. That familiar feeling of belonging, like it's part of you and not just a beautiful part of your home.

Aniline 3 dark brown.

» IO7



Day & Night

During the day it's a generous sofa padding you up with back cushions in two different sizes. Come night, it folds out to become 200 x 80 cm bed. As a bonus, the double mattress allows you use one side during the day, and the other for sleeping.

Design: Niels Gammelgaard.

Caleido 9881 grey-green.

» 99











Kalle

Just like great athletes make things look so easy, Kalle brings a stylish elegance to your interior. Based on a classic design, it's been tweaked and upgraded to come up with a distinct look. And now it's your turn to make it your own.

Elyot 13 grey-beige.

» 118







Sally

Kids love to play with cushions. Select your backrest cushion size (small, large or a mix of both) and order additional lumbar cushions and headrests to create a playful, friendly space with room for eve-ryone. And a tip for parents: choose a washable cover, just in case.

Caleido 3644 coral.

» I70



Howard

Even a classic can do with an upgrade. The stylised legs and beautifully profiled armrests remind of well-known designs found in manor houses. Our version has been combined with a simple and comfortable seat to create a consistent whole.

Drom 54 grey.

» IIO







Play

PLAY is the name for our new family of armchairs, consisting of five different designs: POP, TUNE, SOLO, FUNK and SWING. Each of these compact chairs come with a matching footstool and a choice of wooden or metal legs.

Design: Ian Archer.

*Aniline 7 grey. Paris 2 yellow. Lario 1402 dark green.
Avena 1 beige. Carlina 5 brown-grey. Matrix light grey.*

» I 58





John

As your family grows, so can John. A contemporary design made from quality materials that blends well into any room. The wide selection of components and upholstery allows you to be creative and practical at the same time. Why not add the large footstool to use as an additional seat, or to replace a coffee table?

Science moves 9 green.

» 116



Decoration pillows not included





Lukas

Looks are deceiving. From the outside it looks just like a regular sofa, but inside there's a generous, comfortable bed with a real mattress just waiting to be released in three simple moves. The perfect solution when you don't want your guests to leave, or to help you triumph over the challenges of living in a small space.

Caleido 1420 white.

» I30





Decoration pillows not included

Bari

A comfortable refuge by day and an absolute dream by night, this sofa-bed is a great 2-in-1 solution. The easy fold-out mechanism takes you from relaxing in front of the telly, to tucking in for the night in no time.

*A box for bedding is available to save space.
Bona 9 dark blue – fabric out of the collection.*

» 90









Quattro

Quattro offers a comprehensive collection with durable and elegant contemporary design. Arrange the sofas, corner sofas, armchairs, and footstools to your liking – even at different angles if you want. And here’s an insider tip for you: we’ve designed the armrest to double up as a convenient shelf perfect for snack trays when you curl up in the corner.

Gobi kotton 2 beige – fabric out of the collection.

» I63



Decoration pillows not included



Koriander

This one is for the experienced connoisseurs among us. Those who appreciate large, comfortable seats. Not to mention a high seat, that isn't too deep nor too soft. But to enjoy the sophisticated combination of curves and the simplicity of the cushions, well those are qualities everyone will treasure.

Design: Ian Archer.

Science mores 6 steel.

» I26









Milano

In a really large sofa there's more room for comfort. That sounds reasonable, doesn't it? But there's more to Milano than just the size and comfort. It's also easy to use and can be arranged freely to fit your interior.

Moss 9 light brown.

» I37





Palma

Allow us to introduce a classic: The Palma family has been a Sits staple for years. A straight-forward, timeless design that offers soft, comfortable seating no matter which of all the different options you choose.

Velvety 7 blue.

» 149





Mynta

Mynta is made to look like you want it to. The simple design invites you to explore colours, fabrics, feet and even different extensions for the backrest. No matter what you choose, it will always be as stylish as it is comfortable. And the high seat will allow for easy access to everyday comfort.

*Design: Niels Gammelgaard.
Elyot 8 green.*

» I42





Passion

Looks are important, but it's what's inside that really matters. At least when it comes to comfortable seating. The pocket springs, the high-resilient foam and a soft top of cushions containing a mix of down, feathers and fiberwool balls provide a level of comfort that quite simply has to be experienced.

Vireal 6 light grey – fabric out of the collection.

» I54









Phoenix

A classic design that is unaffected by time – and will continue to be so, thanks to the resilient, highly elastic foam filling that keeps Phoenix in shape year after year. As a bonus, it comes with two extra cushions.

Stipa 8 turquoise.

» I 57



Venezia

There's something about Venezia. Maybe it's the enchantingly simple cubic shape, or perhaps it's the gentle, slim legs that give this piece of furniture its subtlety and balanced shape. Either way, we think you'll enjoy the company of it, as much as you'll enjoy the company of others around the table.

Aniline 6 opal. Vireal 4 brown – fabric out of the collection.

» I94





Viggo

Viggo takes an upholstered seat and a wooden frame to create a simple, everyday chair for any space. From there it's up to you. Take your pick from an unlimited selection of fabric or leather. And why not add a little extra energy to your space by mixing different colours around the table?

Nancy 4 grey-beige.

» 195





Merlin

A dinner chair that can take on any number of appearances. A construction that is solid and comfortable, yet easy to carry around. Does it sound like the work of a magician? Who knows. What we do know is that Merlin works wonders around the dinner table.

Lario 29 light grey.

» 136



Jenny Bistro

Easy on the eye, but anything but lightweight. Jenny bistro is a solid construction with an elegant touch, offering great seating comfort for use at home as well as in public spaces.

Design: Ian Archer.

Elyot 11 dark blue. Moss 14 dark blue.

» II 5





Linn

A classic chair for the dining room with straight armrests and wooden legs. Or, with a bold choice of colour and fabric, a conversation starter that brings you to the table at just the right height. And there's more: thanks to the removable fabric covers or fixed leather covers, we can't think of a more easy-going dinner companion. Bon appétit!

Country 9 stone.

» I27







Vario

Close your eyes and think of the perfect sofa for the whole family. Now open your eyes again. You were thinking of Vario, didn't you? Nice on the eyes – and even nicer to sit in – it's yours to design with a multitude of different modules and options.

Design: Ian Archer.

Vario is also available in a quilted version.

Science mores 7 dark blue.

» I90













Timjan

Timjan is easy to live with. Higher legs makes it easier to reach under the sofa for cleaning. Added height makes getting in and out of the sofa easier. And if you wish to become even more comfortable, that's easy too. Just include the special head rest elements to support your head and neck.

Design: Niels Gammelgaard.

Tiama 3 grey. Science mores 6 steel.

» I86





Elis

The modules, the merrier – especially if you're talking about modules. And it's never been more true than for Elis. Our modular supersofa can take on any number of shapes and sizes, allowing you to create just the comfort zone you wish for.

Vireal 1 natur – fabric out of the collection.

» IOO





Crystal

Glass has the ability to add a sense of lightness to your interior, and this series of coffee tables is no exception. Even the large triangular table size is not overwhelming, but sits nicely in a corner while emphasizing the features of its surroundings

Design: Niels Gammelgaard.

» I96



Secret

The Secret coffee table comes in three unique round versions. One is made entirely of wood, the other two have a wooden top supported by a metal frame. And as the name suggests, they all hold a secret. Just slide the top and reveal the practical storage for small items.

Design: Niels Gammelgaard.

» I97





tea & book

CURL UP ON THE SOFA.
Lean back and let the world disappear for a while. The world of Tea & Book is your perfect hideaway. Each product has an individual design and is characterized by Sits' highest possible comfort level. But enter this world with a bit of caution: you might never want to leave it.



Malte

Create furniture that fits perfectly into your interior. May we suggest a fabric to highlight the design of Malte, or a velvety or chenille fabric to streamline its shape? With the highest level of comfort, and a design tailored to your need the final piece is yours to add.

Elyot 1 natur.

» 235





Decoration pillows not included

Lill

Why make a fuss? With clean, simple lines and a single deep and long seat cushion you've got all you need to create a comfortable, elegant sofa. Add the choice of a fixed cover, or a loose one with a skirt and you've got Lill.

Design: Anna Näsström.

Linen L007 2 flax.

» 231











Sara

A romantic and elegant look that delivers all the comfort and softness you expect from the design. Be sure not to miss the wooden buttons on the back. A sign of the craftsmanship and attention to detail that characterises Sara.

*Design: Dan Ihreborn.
Tweedy 1 natur.*

» 242





Decoration pillows not included





Viktorija

Once you tried it, we think you'll agree: This level of comfort cannot be a coincidence. And of course it isn't. It's created by using carefully selected materials in the backrest and the seat cushions. Extra attention has also been given to the armrests, which form an ideal support for your arms and neck. And now it's all yours to enjoy!

Poem 8 potato.

» 243



Decoration pillows not included

Alaska

The simple lines of this sofa are an indication of the peace and harmony it offers. The wide surfaces of the seats and the gently bent tops of the backrests with soft cushions create a quiet and gentle landscape. A land of peace, a place outside this world. Your very own oasis of peace.

Classic velvet 4 light grey.

» 204





Brandon

A fresh combination of comfort and simplicity supported by a modern touch, Brandon's simple shape is a starting point – choose the basic model to serve as a comfortable and elegant piece of furniture. Or go a step further and design your own modular sofa, or opt for the specially designed module that creates a gentle, eye-catching curve.

Lario 2003 dark grey.

» 208





Decoration pillows not included





Cloud

Don't let the elegant upholstery and decorative sides fool you. Even if appearances are important, the real hero here is comfort. A perfect combination of high, supportive armrest and the softness of the cushions will allow you to create your very own Cloud of cosiness.

Moss 2 dark green.

» 212

Lena

Let Lena into your life! Whether you choose one of the three sofas available in deep and standard versions and two alternative upholsteries, or settle for the spacious armchair, you'll add an easy-going companion to your home.

Design: Dan Ibreborn.

Two different back cushions and a high backrest adds even more options to Lena. Tweedy 5 black-white.

» 226



Decoration pillows not included





61401010039

Halka-kieszon Stockholm
2017 EU 503 Lewa

61401010175

Halka Stockholm 2017
pokrowiec pod. siatki - Lewy

61401010174

Halka Stockholm 2017
S2 pokrowiec pod. siatk.

NOWOSCI
WZORY

Halka VITILE 2017
CZARNEJ ANNA
IND - 023

Halka KESZEN
STOCKHOLM 2017
041

616000104
FavioV

Nowosci

Halka VITILE 2017
CZARNEJ LEWA
IND - 024

Halka VITILE 2017
CZARNEJ
IND - 044



Colorado

The more, the merrier. And Colorado offers plenty of comfort and space to share with your loved ones. Bolster your family celebrations with plenty of cushions and togetherness, there's bound to be something for everyone with arm-chairs, sofas and corner sofas available in various sizes and arrangements.

Lario 1402 dark green.

» 215





Fatty

This family of Scandinavian style footstools make their mark with confidence and beauty. Pick any size you want, small or large, circular or square. A truly unique footstool that will add character and a personal touch to its surroundings. And did we mention that they're surprisingly comfortable as well?

Design: Anna Näsström.

Aniline 4 natur. Specchio 4 navy blue. Specchio 10 anthracite. Arya 4 grey. Aniline 1 latte.

» 217





Heaven

Let comfort come easy. With a wide offer of sofas, armchairs, footstools and corner groups, finding an arrangement that fits into your life is a doddle. The irresistible plush seat cushions and backrest is filled with down. And thanks to the removable covers, we've also got you covered in case of a small accident.

Stipa 1 brown.

» 218









Julia

Can you ever have too much of a good thing? The feather-filled softness of Julia offers you a choice between different comforts, covers and feet – not to mention all the different shapes and sizes on offer. Too much? Surely not.

*Design: Dan Ihreborn.
Malibu velvet 10 yellow.*

» 22 I











Linda

Are you ready to join the fanclub? With this multi-element collection, where every module can be used as a separate piece of furniture, it's hard not to. The uniquely large seats are bolstered with allergy-friendly silicone balls for irresistible softness. Create your own arrangement, sit back and enjoy as the other fans gather around you.

Science moves 9 green.

» 232





Amy

Lean back and enjoy the comfort of Amy, a charmingly simple design and the perfect place for letting hours pass by. Find your own level of plushness by choosing between leathers and fabrics.

Design: Steven Schilte.

Elyot 14 grey. Atropa 10 grey. Linen Q425 laundered 11 nature.

» 207

Casual

A wood table with a light touch. It can also hold a practical tray for all the things you want to have within reach.

Design: Dan Ihreborn.

» 246



Abbe

Convincingly simple, Abbe offers timeless class and exceptional comfort with cushions filled with allergy-friendly silicone balls. Select a fabric of your choice to create a perfect match for your home, and why not boost the comfort even more by adding cushions?

Nancy 3 brown.

» 202







Oscar

Let's go cushion crazy! In Oscar, it's all for a good reason. The cushions – and there are many of them – complement and offset the clean and simple design of the furniture. With three different sizes and a wide range of fabrics they help you create the cushion-tastic centrepiece your home is dreaming of. All modules are freestanding and easy to rearrange – even the armrests are mobile!

Caleido stampato 11 grey-brown.

» 239





New York

With its large size and deep seats, New York is the best place for getting together with your friends. The feather-filled cushions are soft, and lumbar cushions give additional back support. With its removable covers, this is a sofa you will be able to enjoy for many years.

Lario 1402 dark green.

» 238



Decoration pillows not included







Penny

Thinking about an easychair that provides support and comfort all in one? With a pillow to rest your back against, and perhaps an optional foot stool for putting your feet up? Well, here's a Penny for your thoughts.


Design: Dan Ihreborn.

Stipa 2 beige. Malibu velvet 11 green.

» 241







Love

Don't you just love a good table? One that marks its presence in the room without taking over. Sturdy and solid as proof of genuine craftsmanship, yet designed with a delicate and elegant touch. When you find one like that, it must be Love.

Design: Niels Gammelgaard.

» 247





